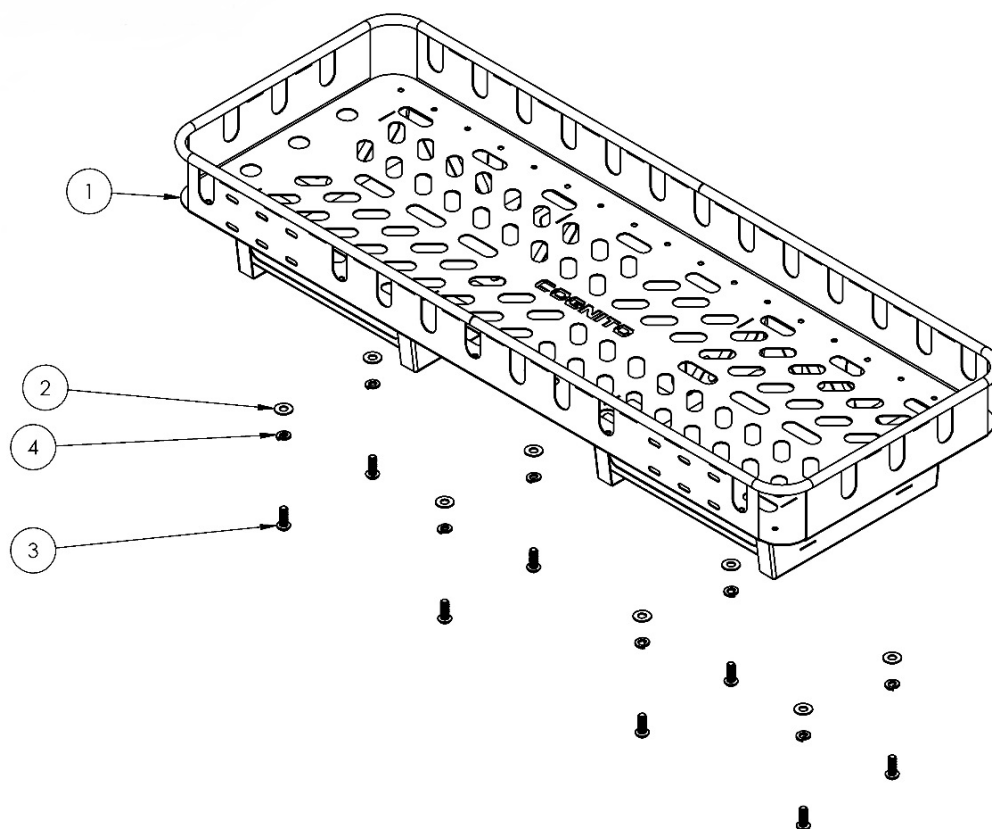




**4 Seat RZR XPTurbo & XP1000
Cargo Rack Rear Seat Replacement
SKU #: (360-90389)**



1	8511	Polaris Seat Mounted Cargo Base Full	1
2	HW-33082	SAE Zinc Plated Flat Washer for 3/8" Screw Size, 0.406" ID, 0.875" OD	8
3	HW-15105	Hex Drive Rounded Screws, Zinc-Plated Alloy Steel, 3/8"-16 Thread Size, 1" Long	8
4	HW-33622	Zinc-Plated Steel Split Lock Washer for 3/8" Screw Size, 0.385" ID, 0.68" OD	8
5	6165	1" – 8' Adjustable Straps	2

Tool Requirements

➤ **Tool List (360-90389)**

- 9/16" Wrench
- Tape Measure
- Permanent Marker
- 1/4-20 Tap
- 5/32" Hex Key
- Cut-Off Circular Wheel Saw



Precautions & Recommendations

- Always work on a properly supported vehicle. Do not tighten any fasteners until instructed to.
- Always wear safety glasses when using power tools.
- Wear proper gloves and watch for pinch points.
- Read instructions carefully and study the pictures (if included) before attempting installation.
- Check the parts and hardware packages against the parts list to assure that your kit is complete.
- Rear seats are removed and replaced with the cargo rack, using the same base plates.
- This kit was built to work hand-in-hand with the RIDGID 22" Pro Toolbox and the 22" Pro Organizer. These toolboxes are recommended for this kit; stack up to two of the RIDGID 22" Pro Toolbox and one of the RIDGID 22" Pro Organizer on top of each other. The toolbox will sit perfectly within the holes of the cargo rack design. Once they're all stacked up on each other, strap them down using the provided ratchet straps.

Installation # 7134

Installation Steps

- 1) Remove back seats by grabbing latch that is placed behind the seats as shown in figures 1 & 2.



Figure 1: Reach in-between the back plate and the seat. It is circled in red.

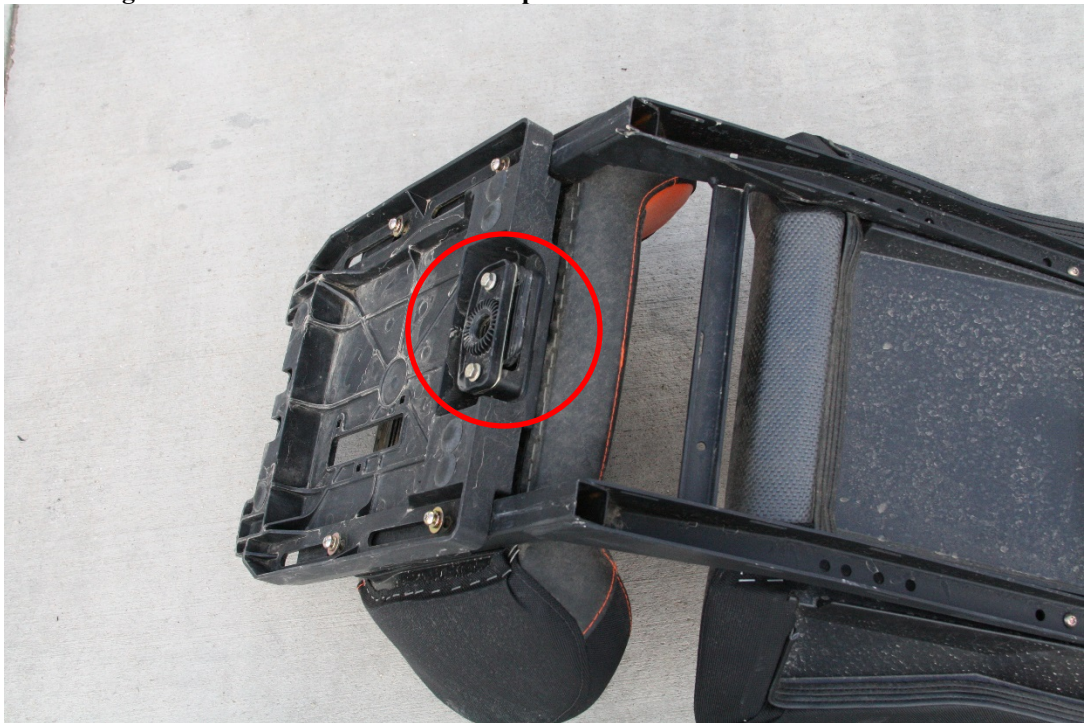


Figure 2: Circled in red is the latch that must be pulled up from the seat pin on the RZR.

Installation # 7134

- 2) Before complete removal of the base plate (shown in figure 3), take measurement of where the bolts are with a tape measurer or simply mark it with a permanent marker for when you decide to put your seats back on.
- 3) Once this has been done, you may now remove the base plates of rear seats. Save the existing stock hardware. You will need the stock hardware if you decide to put your rear seats back in. First you must remove the four bolts that are placed at the bottom of the seats. Circled in figure 3.

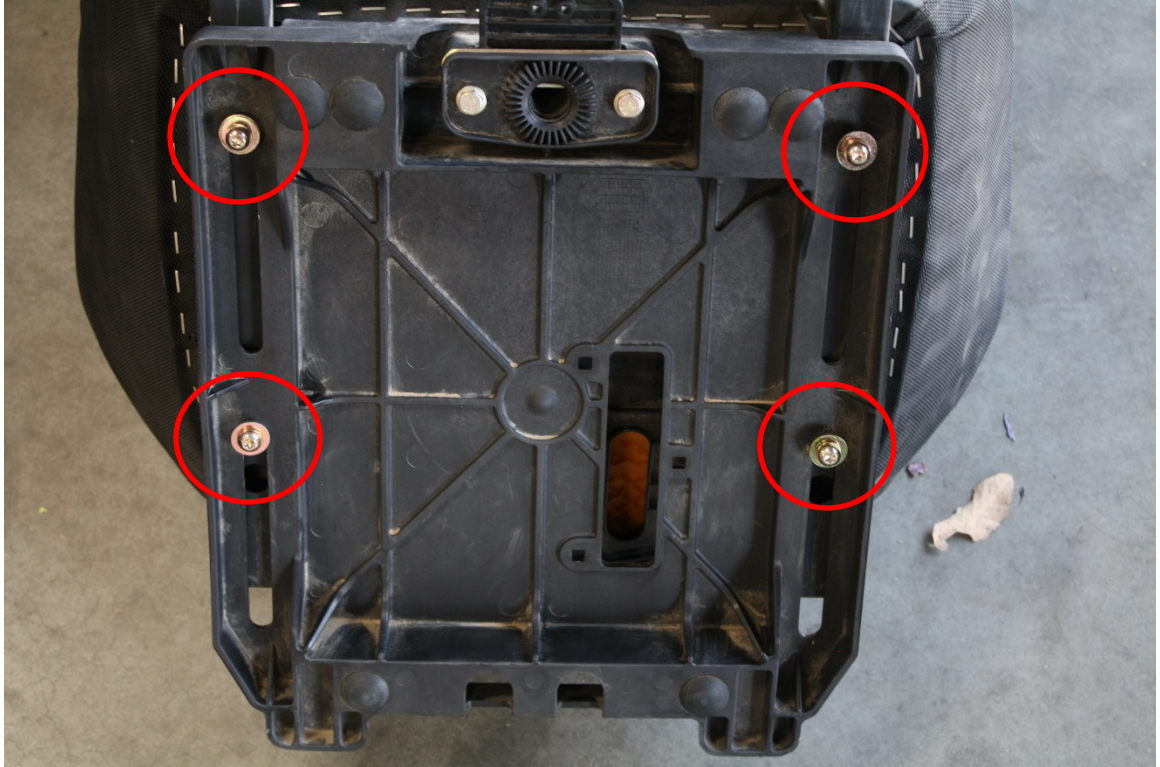


Figure 3: (If new base plates have been purchased these don't need to be removed.) Shows the four bolts that must be removed - before removal, take note of where the bolts are placed by taking measurement or by marking the base plate with a permanent marker.

- 4) Once the four bolts have been removed, the base plate should just pop off, carefully remove the base plate.
- 5) Once the base plates are removed, using the Cognito hardware, install the base plates onto the bottom of the cargo rack the same way that it was removed. Measure 1 inch from the end of the base plate slot to the screw as shown in figure 4.

Installation # 7134



Figure 4

- 6) Tighten screw to 10ft. lbs. See figure 5.

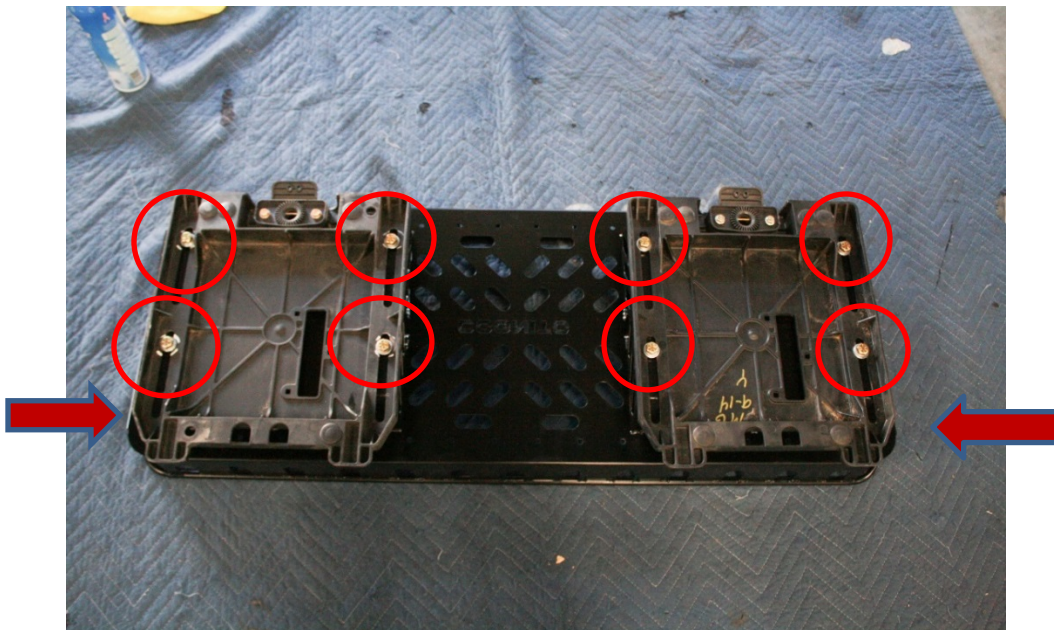


Figure 5: Shows what the bottom of the Cargo Seat Replacement should look like once all screws are in and have been tightened. The red circles indicate the location of the screws that need to be tightened.

- 7) After installation of the base plate, it should as shown in figure 6 with the base plate shoes facing forward and the COGNITO logo reading left to right.

Installation # 7134

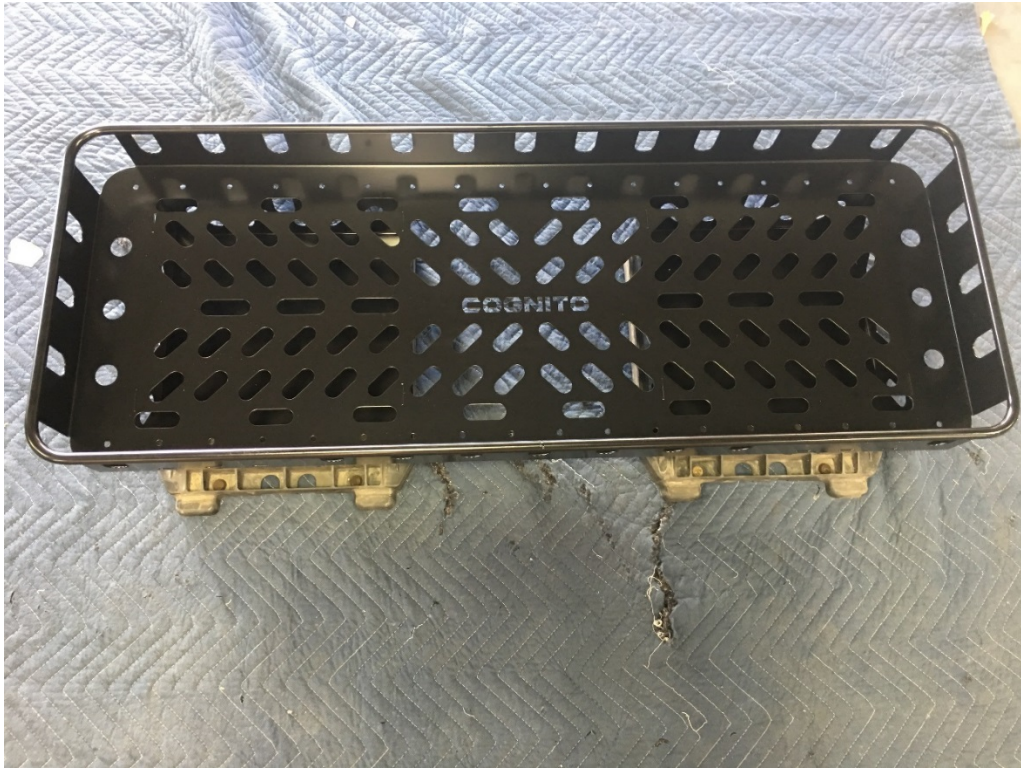


Figure 6

- 8) Once the seat bases have been mounted, the cargo rack can then be installed as the seats are installed, by hooking the front foot of the base and snapping closed on the pin of the RZR. Installation is the opposite from when the seats were removed.



Figure 7: The red arrows show where the shoes needs to be hooked into, and points out the location of the snapping pin.

Installation # 7134

- 9) Once mounted, the cargo rack should look as shown in figure 8.



Figure 8

- 10) Now that the Rack is in, and the RIDGID boxes are ready to be installed, remove the hinge pin by knocking it out with a flat head screw driver and a hammer as shown in figure 9.

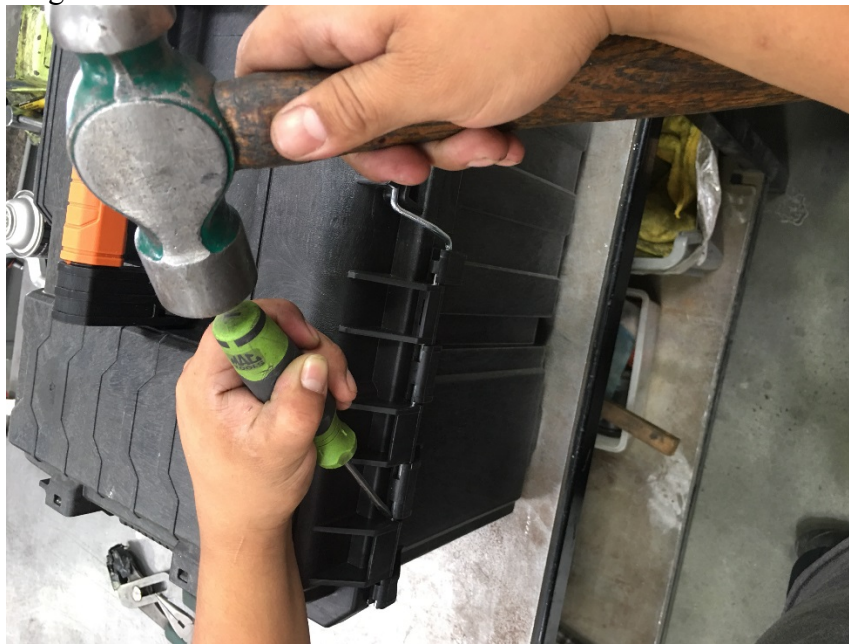


Figure 9

Installation # 7134

- 11) Once the pin is out, using a $\frac{1}{4}$ -20 tap, carefully thread the inside of the pin slot. See figure 10.



Figure 10: Only thread the end of the slot, circled in red.

- 12) The hinge pin that was removed must be cut by $\frac{5}{8}$ ". See figure 11



Figure 11: Shows the amount that needs to be cut off the hinge pin, which is $\frac{5}{8}$ ".

- 13) Once the hinge pin has been cut and the pin slot has been tapped. You may now re-install the hinge pin by sliding it in the slot that you pulled it from. Then you can

Installation # 7134

use the provided ¼-20 Button Head bolt and screw it in where you re-installed the hinge pin from. See figure 12.



Figure 12: Slide hinge pin in, then screw in the provided bolt and tighten it.

- 14) The final result should look as shown in figure in 13.
- 15) Repeat steps 9-13 for all 6 hinge pin slot ends.



Figure 13

Installation # 7134

- 16) Throughout the rim of the cargo rack there are several slots that can be used for fastening straps and securing the cargo.



Figure 14

Installation # 7134



Figure 15



Figure 16

Cognito Motorsports

Limited Lifetime Warranty

Cognito Motorsports warrants, to the original retail purchaser, that its suspension products are free from defects in workmanship and material for as long as the purchaser owns the vehicle on which the product was originally installed. Cognito Motorsports does not warrant the product for finish, alterations, modifications, and/or original installation contrary to specifications of Cognito Motorsports. Cognito Motorsports suspension products are not designed nor intended to be installed on vehicles used in race applications or for racing purposes or for similar activities involving abnormal abuse other than the vehicle was originally designed to handle or endure. (A "RACE" is defined as any contest between two or more vehicles, and/or contest of one or more vehicle against the clock, whether or not such contest is for a prize.)

This warranty does not include coverage for police or taxi vehicles, race vehicles, or vehicles used for government or commercial purposes. Also excluded from this warrant are sales outside of the United States of America. Alterations to the finish of the parts including but not limited to painting, powder coating, plating, and/or welding will void all warranties. Cognito Motorsports obligation under this warranty is limited to the repair or replacement, at Cognito Motorsports option of the defective product. Any and all costs of removal, installation or re-installation, freight charges, incidental or consequential damages are expressly excluded from this warranty.

This warranty excludes the following items: bushings, bump stops, tie-rod ends, limiting straps, and heim joints. These parts are subject to wear and are not considered defective when worn. They are warranted for 60 days of purchase for defects in workmanship. Cognito Motorsports suspension components must be installed as a complete system. Any substitutions or exemptions of required components will immediately void the warranty. Some finish damage may happen to parts during shipping and is not covered under warranty. This warranty shall not apply to any product that had been subject to accident, negligence, alteration, abuse, or misuse. Cognito Motorsports does not warrant products not manufactured by Cognito Motorsports. Cognito Motorsports reserves the right to supersede, discontinue, or change the design, finish, part number and/or application of parts when deemed necessary by Cognito Motorsports without written notice.

Return Policy

Cognito Motorsports has a no refund return policy. Under special circumstances, returns might be accepted with prior written approval. All returned product will be shipped freight prepaid. Product returned is subject to a 25% restocking fee. No returns will be accepted after 30 days upon receipt of product.

Product Consumer Safety and Warning

The installation of this kit will modify the suspension of your vehicle and may cause it to handle significantly different than a factory equipped vehicle. Installing larger tires with modified suspension and increased ground clearance will significantly alter the handling characteristics of the vehicle, and may result in increased braking distances as well as changes in vehicle maneuverability and handling compared to the factory equipped vehicle. As with any vehicle, extreme caution and care must be used to prevent loss of control or roll-over during sharp turns or abrupt maneuvers. Always wear seat belts and drive safely, recognizing the reduced speeds and specialized driving techniques is required.

This suspension system will not strengthen nor reinforce the stock frame of the vehicle, nor will it increase rollover protection. It is necessary to periodically inspect all suspension and drive train components for tightness of fit or any damage. Installation of these parts will modify the height of the vehicle and will raise the center of gravity. Altered height modifications and off-road operation may increase your vehicle's susceptibility to roll over conditions and may cause serious injury or death. Many states regulate the height modification to each vehicle. Check the laws in your state for exact specifications. Height modifications may effect the reaction, ride, handling, and wear factor of your vehicle's components.

Failure to drive this vehicle safely may result in injury or death! Do not drive this vehicle unless you are familiar with its unique handling characteristics and are confident of your ability to maintain control under all driving conditions. Some modifications and combinations of modifications are not recommended, unsafe, and may not be permitted in your state. Consult your vehicle owner's manual, the instructions accompanying this product, and your state laws before undertaking these modifications. The owner of the modified vehicle and the qualified mechanic required to install this product are responsible for the legality and safety of the vehicle being modified.